



TEMPLE FORTUNE LANE

LONDON, NW11 7TY

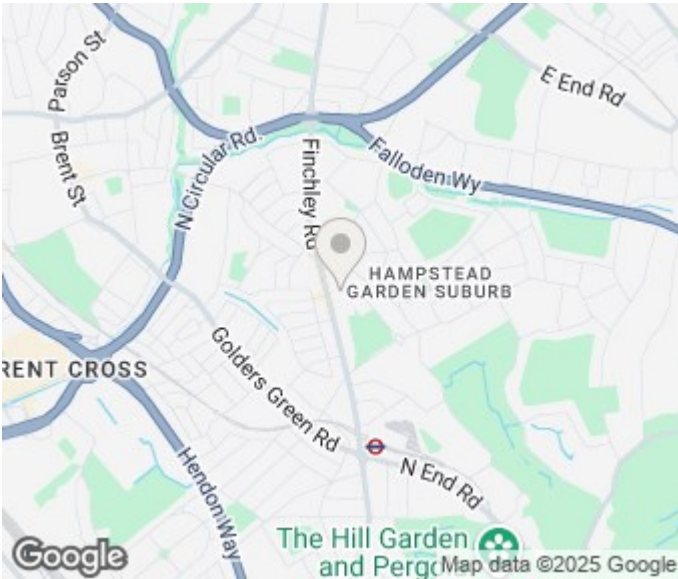
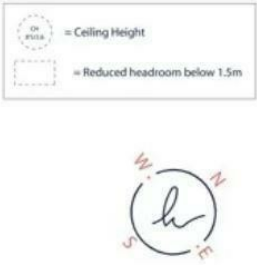
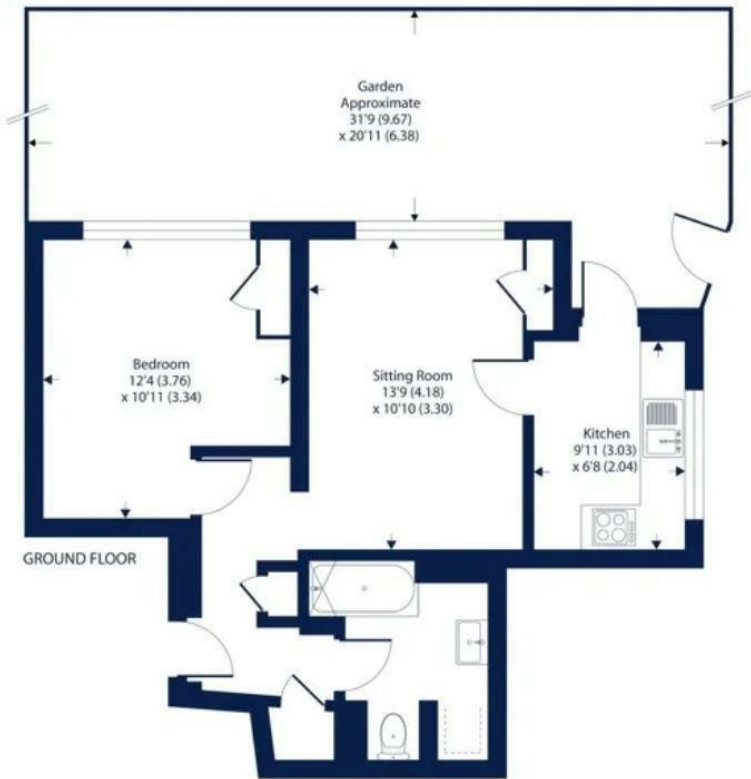
£1,699 PER MONTH

A bright and spacious one bedroom ground floor apartment in this sought after location. The property consists of a good size bedroom with fitted wardrobes and living room both with laminate flooring, separate kitchen, fully tiled bathroom/wc and a communal garden. Just moments away from all the local shop in Temple Fortune and close to Brent Cross and Golders Green tube station. Offered unfurnished and is available now.

david harris & co

Charlton Lodge, Temple Fortune Lane, London, NW11

Approximate Area = 462 sq ft / 42.9 sq m
Limited Use Area(s) = 5 sq ft / 0.4 sq m
Total = 467 sq ft / 43.3 sq m
For identification only - Not to scale



Energy Efficiency Rating		
	Current	Potential
Very energy efficient - lower running costs		
(92 plus) A		
(81-91) B		
(69-80) C		
(55-68) D	68	78
(39-54) E		
(21-38) F		
(1-20) G		
Not energy efficient - higher running costs		
England & Wales	EU Directive 2002/91/EC	

Agents Note: Whilst every care has been taken to prepare these particulars, they are for guidance purposes only. All measurements are approximate and are for general guidance purposes only and whilst every care has been taken to ensure their accuracy, they should not be relied upon and potential buyers/tenants are advised to recheck the measurements

Finchley Lettings
358 Regents Park Road
Finchley
London
N3 2LJ

020 8346 9122
info@davidharris.co.uk
www.davidharris.co.uk

david harris & co